

Passages Control System is a simple and easy to use system, which basic task is to monitor and remotely control the passages. The operation of this system is similar to MajorDomus[®] system: after receiving request and visual confirming the situation or a person (using CCTV system), the operator opens the passage. Additionally, the PCS system can be equipped with an interphone system, which – depending on configuration – can work as:

- voice communication aid during passage request,
- standard interphone system between operator and rooms regardless of PCS functionality.

PCS operation.

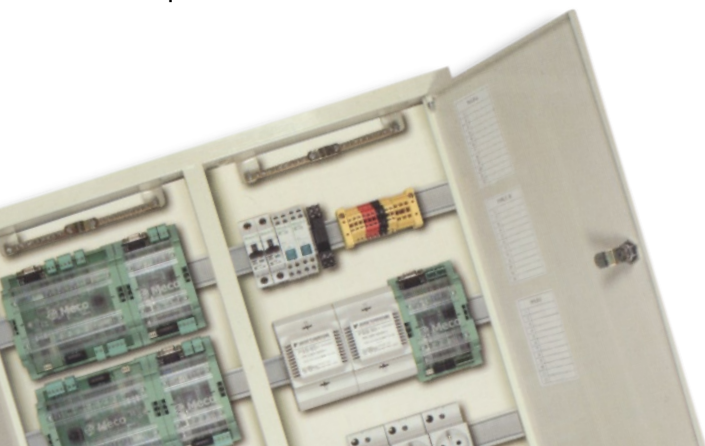
Working with PCS system is basically operating the system central unit, which presents all necessary information using LED lamps, i.e.: all passage requests, currently served request, etc.

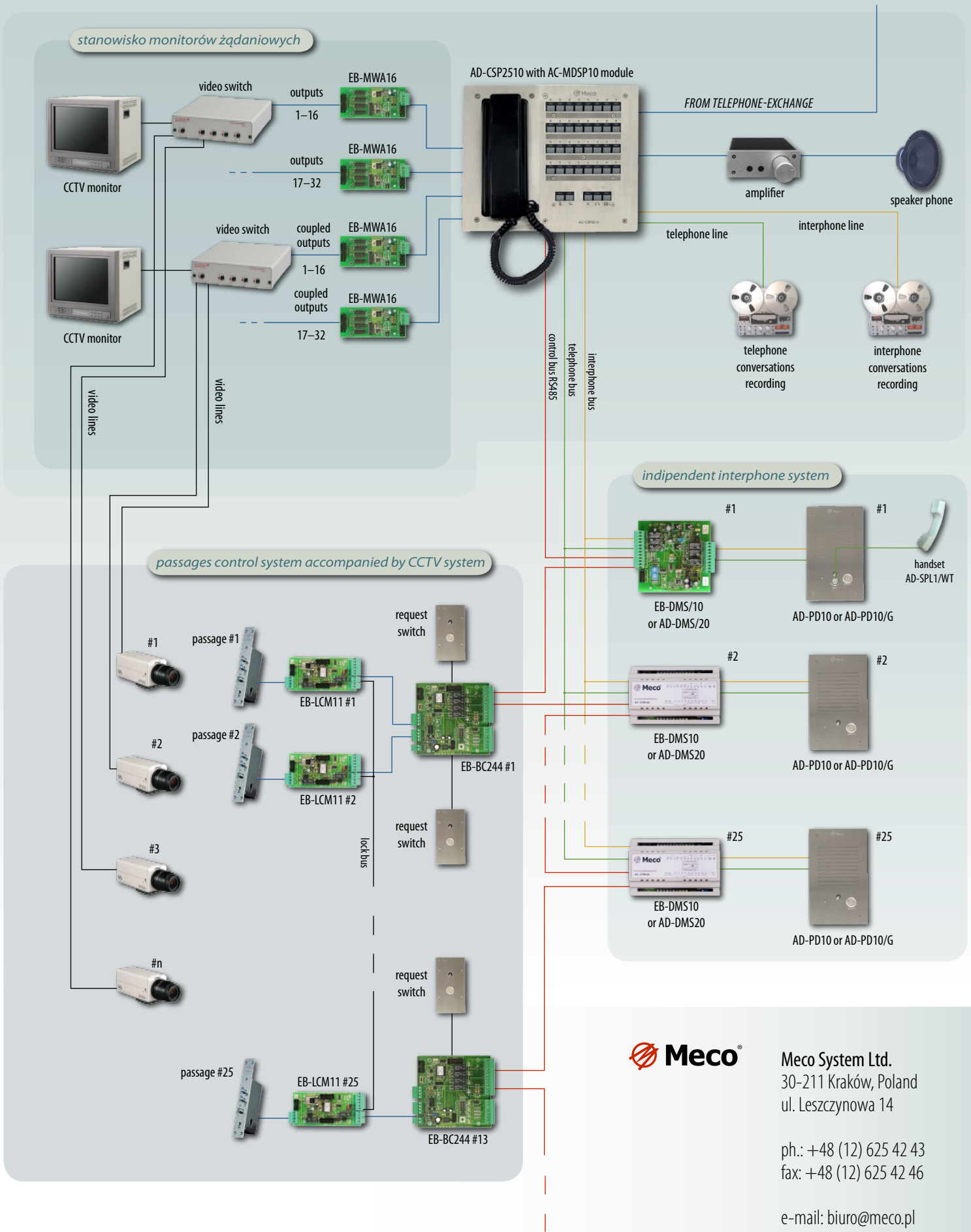
The operator, using the information from the system, decides which request to serve (by pushing the corresponding button on the unit). The system shows the images from cameras installed over the passages on CCTV monitor (or two integrated monitors). Of course, the operator can reject the passage request or cancel the current request and serve another one by pushing the appropriate button on the unit. Additionally, the system provides ability to view the images from any CCTV camera as the current task queue.

Easy system upgrading and migrating to MajorDomus[®] system.

The system can work with up to 25 passages and up to 25 independent interphone stations. Building of such a system can be divided into phases. The system expanding consists of hooking up next controllers and other devices to control buses. Additionally, the system can be easily converted into MajorDomus[®] system without changing installed components and virtually without any changes in switch-box configuration. This conversion means, practically, dividing the PCS control bus into two buses:

- bus controlling the interphone system (interphone controllers) and leaving the PCS system in it as the separate system,
- bus controlling EB-BC244 controllers (and through them controlling EB-LCM11 modules) and then hooking-up to MajorDomus[®] system.





Meco System Ltd.
30-211 Kraków, Poland
ul. Leszczynowa 14

ph.: +48 (12) 625 42 43
fax: +48 (12) 625 42 46

e-mail: biuro@meco.pl
www.meco.pl